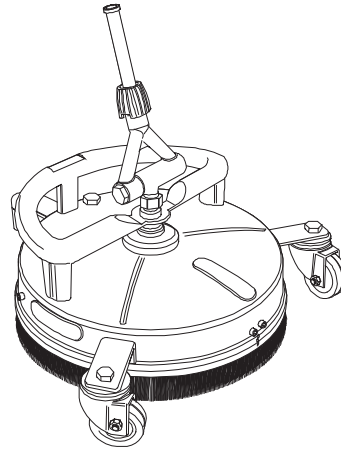




KÄRCHER®

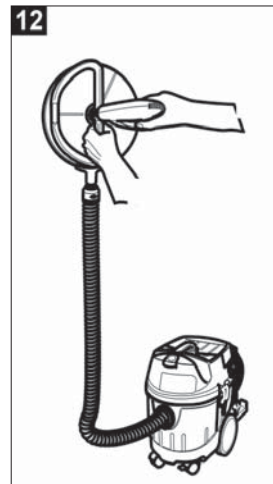
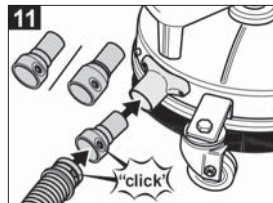
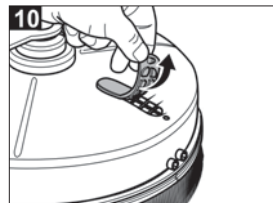
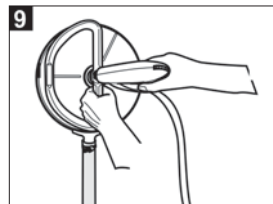
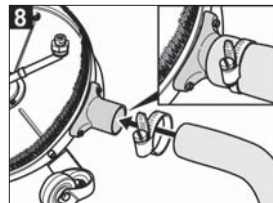
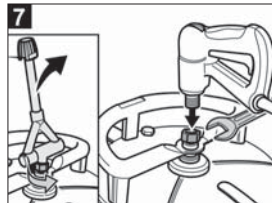
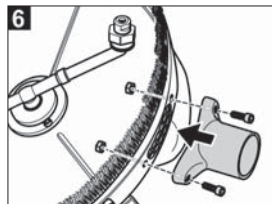
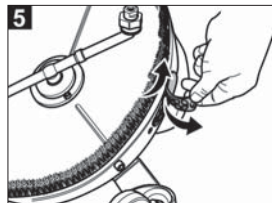
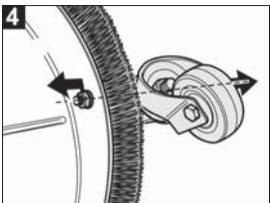
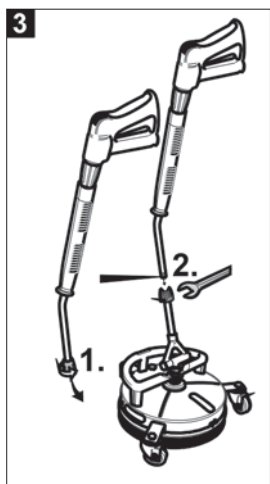
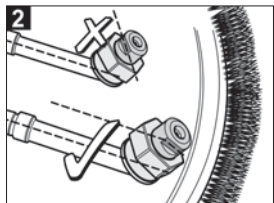
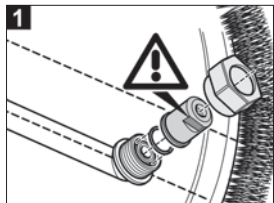
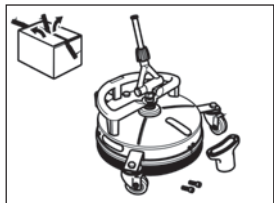
FR 30 Me



5.960-580.0 02/09

Register and win!
[www.karcher.com!](http://www.karcher.com)

FR 30 Me



For your own safety!

Use

- Prior to utilization the appliance and its working facilities must be checked regarding their proper condition and that they operate safely. It must not be used if its condition is not faultless.

— No modifications permitted on the machine.

Operation

- Never reach under the unit while the high-pressure cleaner is operating
- Take into account the afterrunning of the rotation arm of the stopped unit
- Never direct the jet at humans or animals

Intended use

The FR 30 is suitable for cleaning floors and walls in conjunction with a high-pressure cleaner.

Maximum water pressure:
25 MPa (250 bar)

Maximum water temperature:
85 °C

Important

Prior to initial operation of the unit we request you to carefully read the information given in the operating instructions.

Inform your dealer immediately of shipping damage.



Please dispose of packaging environmentally responsibly

The packaging materials are recyclable. Please do not throw the packaging in with household rubbish but take it to a recycling centre.



Please dispose of scrapped units environmentally-responsibly

Scrapped units consist of valuable recyclable materials that should be taken to a recycling centre.

Batteries, oil and similar products must not be allowed to contaminate the environment. Therefore, please dispose of scrapped units via appropriate disposal systems.

Nozzle kits



Warning!

The required nozzle kits are adapted to the relevant connecting unit and must be ordered separately if they are not already installed or included with the unit .

High-pressure cleaner with flow rate of	450-500 l/h
Nozzle kit	2.640-482

High-pressure cleaner with flow rate of	500-650 l/h
Nozzle kit	2.640-401

High-pressure cleaner with flow rate of	650-850 l/h
Nozzle kit	2.639-187

High-pressure cleaner with flow rate of	850-1100 l/h
Nozzle kit	2.640-442

High-pressure cleaner with flow rate of	1100-1300 l/h
Nozzle kit	2.639-188

Nozzle kit assembly

Fig. 1

Note:

Observe sequence!

- Insert O-ring in groove of rotation arm
- Plug-on nozzle
- Screw nozzle not too tight with union nut

Fig. 2



Warning!

The discharge jet must be aligned parallel to the rotation arm

- Align spanner-grip surface of the nozzle (width across flats 10) parallel to rotation arm
- Tighten union nut (width across flats 22) with a spanner

Cleaning floors

Fig. 3

- Connect steel pipe of high pressure cleaner to the FR 30 and tighten it with a spanner (width A/F 24)

Cleaning walls

Preparation for siphoning-off water

Note:

A suction device or a drain hose can be connected with the provided suction drain fitting

Removing the wheel set

(as required)

Fig. 4

- Do not remove swivel casters from bracket
- Unscrew bracket from unit
- Refasten screws to the unit (stabilisation of the bristles)

Installing the suction fitting

Fig. 5

- Pull off cover

Fig. 6

- Fasten the suction fitting with the supplied screws and nuts

High-pressure cleaner connection

Fig. 7

- Disconnect angle joint from unit (width A/F 27)
- Screw on handgun directly
- Tighten union nut with a spanner

Siphoning-off water options

Hose connection

Fig. 8

- Fasten hose with hose clamp to suction fitting

Fig. 9

- Hold the unit at the centre support

- Ensure that the hose hangs down vertically

Siphon connection

Fig. 10

- The cover must be removed in order to prevent a vacuum developing

Fig. 11

- Connect hose of the siphon to the suction fitting

Note

See accessory page for coupling sleeves

Fig. 12

- Hold the unit at the centre support
- Ensure that the hose hangs down vertically

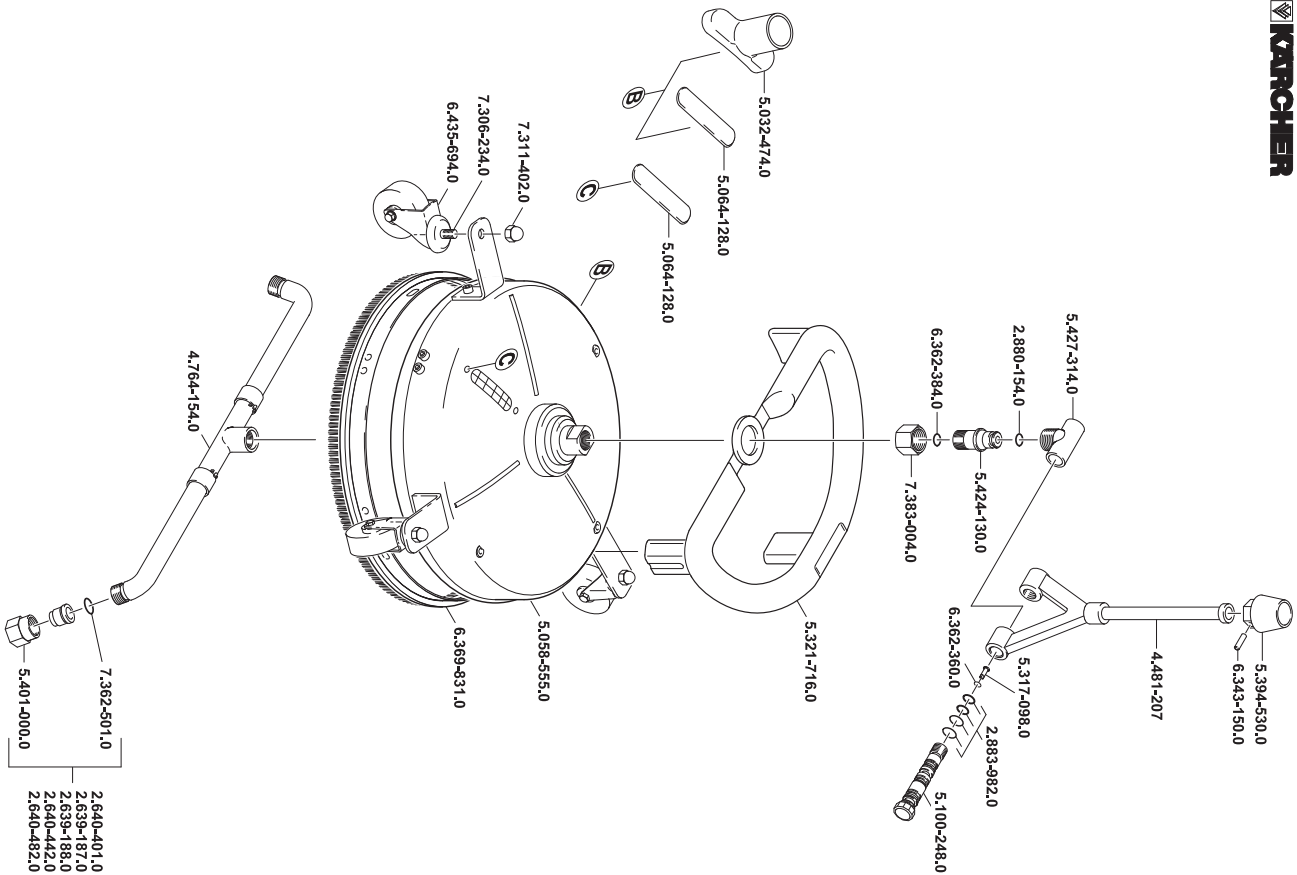
Care


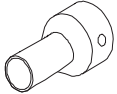
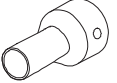
- protect from frost
- Lubricate swivel casters regularly
- Ensure bristles are not deformed during storage

FR 30 Me



5.960-580.0 02/09



		Ø [mm]	
	5.407-109	C 40 EL DN 35	
	5.407-112	C 35 EL DN 35	
<p>EL = elektrisch leitend C = Clip-Verbindung DN = Konus-Verbindung electrical conductive Clip connection Cone connection conducteur électrique Connexion de clip Connexion de cône</p>			