

CREATING A CLEANER, SAFER, HEALTHIER WORLD.

EQUIPMENT



# T300/T300e ORBITAL

## WALK-BEHIND FLOOR SCRUBBER

Delivering high performance and consistent results for virtually any hard surface condition while lowering cleaning costs

# IMPROVE THE EFFECTIVENESS OF YOUR CLEANING RESOURCES, INVESTMENTS, AND OPERATIONS



## REDUCE COST TO CLEAN

- **Reduce costs to clean** by virtually eliminating slippery floor stripping chemicals and postponing expensive and time consuming stripping.
- **Standardize your cleaning operations** with programmable Zone Settings™.
- **On-board machine instructions** help ensure machine is operated in a safe manner for better results, simplified training, and reduced costs to clean.
- **Increase runtime by up to 46%** with 2200 1/4" RPMs.\*

## ENHANCE FACILITY IMAGE

- **Easily clean textured and grouted floors** through consistent down pressure and multiple pad options.
- **Ensure consistent cleaning performance and full pad saturation** with unique solution disbursement system.
- **Reduce machine noise levels** to as low as 58 dBA for daytime cleaning and in sound sensitive areas with Quiet-Mode™.

## IMPROVE HEALTH AND SAFETY

- **Minimize risk of slip-and-fall accidents** and ensure dirt and soils are removed from the floor with updated squeegee design.
- **Ensure operator comfort** and reduce vibrations with 10 long-lasting isolators.

## MINIMIZE ENVIRONMENTAL IMPACT

- **Quickly and easily remove floor finish** with high RPMs, heavy down pressure, and surface prep pad without using caustic stripping chemicals.
- **Reduce water consumption** and disposal of cleaning detergents into the waste stream with ec-H2O NanoClean® technology.

\*When compared to Tennant 20" (50 cm) self-propel disk machine.

# SAVE TIME AND MONEY ON EQUIPMENT AND TRAINING WHILE IMPROVING YOUR FACILITY'S IMAGE

## ONE MACHINE. MAXIMUM VERSATILITY.

Maximize your return on investment with the T300 or T300e Orbital scrubbing machine, ideal for daily cleaning or chemical-free floor finish removal for a wide variety of markets, applications and floor types.

### MARKETS:

Education  
Healthcare  
Retail  
Hospitality

### APPLICATIONS:

Aisle Ways  
Checkout Counters  
Classrooms  
Entryways  
Cafeterias  
Kitchens

### FLOOR TYPES:

Uneven and Textured Floors  
Grouted Ceramic and Porcelain Tile  
VCT  
Polished Stone  
Marmoleum®  
Teknoflor®



Marmoleum®



Textured Floor



Grouted Tile

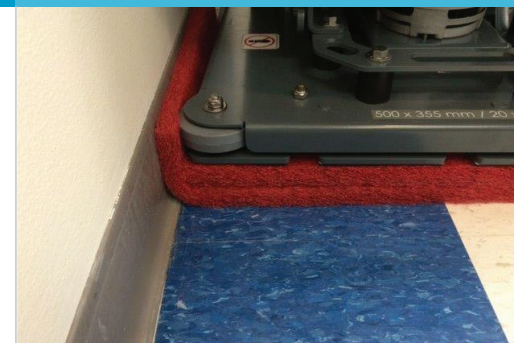


Polished Stone

ec-H2O NanoClean® technology electronically converts water into an innovative detergent-free cleaning solution.

Tennant provides multiple cleaning pads to address a variety of cleaning conditions.

Effortlessly clean edges, corners and baseboards using rectangular cleaning head options.



- Reduce rework, labor and safety costs by using only TennantTrue parts and service.
- Ensure optimal cleaning performance by selecting a TennantTrue Service program provided by a network of over 400 factory-trained Tennant service representatives.
- Improve uptime by leveraging TennantTrue parts and service.
- Simplify budgeting by bundling TennantTrue service plans, including parts, into the purchase or financing of your machine.

## ENVIRONMENTAL STEWARDSHIP



ec-H2O NanoClean® technology is NFSI (National Floor Safety Institute) Certified



ec-H2O NanoClean technology is registered by NSF International

## T300/T300e ORBITAL WALK-BEHIND FLOOR SCRUBBER

	T300 20 IN/500 MM SELF-PROPEL	T300e 20 IN/500 MM SELF-PROPEL
<b>SCRUBBING SYSTEM</b>		
Control panel		
Membrane™ Panel	Optional	–
Pro-Membrane™ Panel	Optional	–
Pro-Panel™	Optional	–
Instructional Overlay	–	Standard
Productivity (per hour)		
Theoretical Max	20,000 ft <sup>2</sup> / 1,858 m <sup>2</sup>	20,000 ft <sup>2</sup> /1,858 m <sup>2</sup>
Estimated Coverage*		
Conventional	14,943 ft <sup>2</sup> / 1,388 m <sup>2</sup>	14,943 ft <sup>2</sup> /1,388 m <sup>2</sup>
ec-H2O NanoClean®	15,469 ft <sup>2</sup> / 1,437 m <sup>2</sup>	15,469 ft <sup>2</sup> /1,437 m <sup>2</sup>
<b>BRUSH DRIVE SYSTEM</b>		
Scrub motor	0.6 hp / 0.45 kW	0.6 hp/0.45 kW
Brush/pad RPM	2,200 rpm	2,200 rpm
Brush/pad pressure	63, 92, 109 lbs / 29, 42, 49 kg	63 lbs/29 kg Optional 109 lbs/49 kg
<b>SOLUTION/RECOVERY SYSTEM</b>		
Solution tank capacity	11 gal / 42 L	11 gal/42 L
Recovery tank capacity	14 gal / 53 L	14 gal/53 L
Vacuum motor	24 VDC, 0.6 hp / 0.47 kW	24 VDC, 0.6 hp/0.37 kW
Vacuum waterlift	42 in / 1067 mm	34.5 in / 876 mm
Vacuum waterlift with Quiet-Mode™	28 in / 711 mm	–
<b>CLEANING TECHNOLOGY</b>		
Conventional	Standard	Standard
ec-H2O NanoClean	Optional	Optional
ec-H2O NanoClean with Severe Environment switch	Optional	–
<b>BATTERY SYSTEM</b>		
System voltage	24 volt	24 volt
Battery types (Wet 105AH, Wet 130AH, Wet 150AH, Sealed AGM 140AH)	2 required	2 required
Battery run time (up to hours)**	3.8	3.7
On-board charger	Standard	Standard
Off-board charger	Optional	Optional
<b>MACHINE SPECIFICATIONS</b>		
Length	49 in / 1,245 mm	49 in/1,245 mm
Width	20.5 in / 521 mm	20.5 in/521 mm
Height	43.10 in / 1,095 mm	43.10 in/1,095 mm
Weight (without batteries)	255 lbs / 116 kg	255 lbs/116 kg
Weight (with batteries)	415 lbs / 188 kg	415 lbs/188 kg
Sound level (operator's ear)***	66.4 dBA	67.5 dBA
Quiet-Mode (operator's ear)***	57.6 dBA	–
<b>WARRANTY</b>		
See your local representative for warranty information		

\* Estimated coverage rates use the practical speed and empty/fill time standards from the 2004 ISSA Cleaning Times handbook.

\*\* Run times are based on continuous scrubbing run times.

\*\*\* Sound levels per ISO 11201 as recommended by the American Association of Cleaning Equipment manufacturers & OSHA.

Specifications subject to change without notice.

**Lease. Pre-Owned. Rent. Tennant has flexible options that get you the machines you need, however you need them.**

## SEEING IS BELIEVING

For a demonstration or additional information, call +1.800.553.8033 or email [info@tennantco.com](mailto:info@tennantco.com)

Tennant  
701 North Lilac Drive  
Minneapolis, MN 55422 USA

USA/Canada: +1.800.553.8033  
Quebec: +1.800.361.9050  
Overseas: +1.763.540.1315

[www.tennantco.com](http://www.tennantco.com)  
[info@tennantco.com](mailto:info@tennantco.com)